



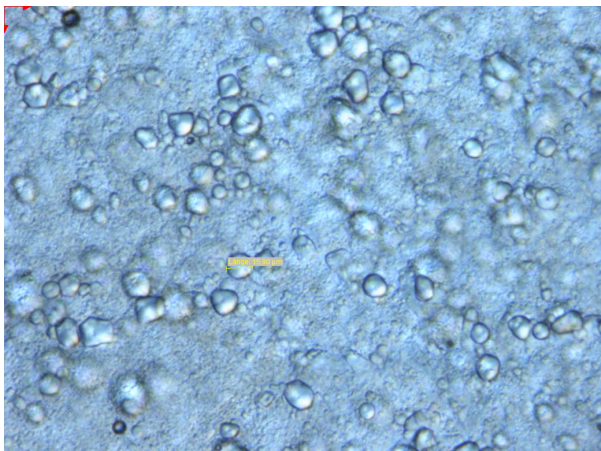
# Non Foaming Face & Body Shave Cream

This rich shaving Cream allows the razor to glide smoothly without irritation over your skin to leave a pleasantly soft after-feel when you finish. This non-foaming formula is enriched with a host of natural ingredients – most notably being Aloe, Almond oil and natural based Butylene Glycol – that promotes moisture and nourishment to your skin. After the shaving, highly concentrated Vitamin C protects the skin from oxidative stress caused by environmental pollution. Zea mays (corn) starch gives an extraordinary silky and powdery after skin-feel. This starch is well-known for its sebum absorption property which makes it suitable for use for oily and sensitive skin.

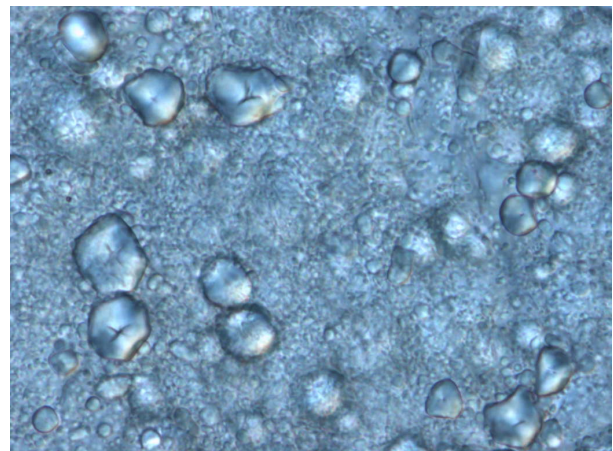
## Inside the Formulation

### MAISITA 9040

Native COSMOS certified Zea Mays (corn) starch with exceptional silky and powdery, dry, smooth skin after feel. It helps to control residual shine of oily skin combined with perceivable tackiness/stickiness reduction. MAISITA 9040 is used after manufacture (40°C and below) to gain all product benefits as described without changing the rheological profile.



Pict.1



Pict.2

Microscopic pictures of Non Foaming Face & Body Shave Cream; Pict.1 200-fold magnification with polarization unit and Nomarski Prisma; Pict. 2: 400-fold magnification with polarization unit and Nomarski Prisma.



creating value,  
growing together

**Formulation reference : 801-1-1**

Phase	Raw Material	INCI	%w/w	Supplier
A	DUB Base Expert+	Glyceryl Stearate Citrate, Sucrose Stearate, Polyglyceryl-4 Cocoate, Cetyl Alcohol, Sodium Ricinoleate	8.00	Stéarinerie Dubois
A	Cetyl Alcohol	Cetyl Alcohol	4.00	
A	Stearyl Alcohol	Stearyl Alcohol	3.00	
A	DUB ININ	Isononyl Isononanoate	4.00	Stéarinerie Dubois
A	Blanova® Sweet Almond Oil	Prunus Amygdalus Dulcis Oil	1.00	Azelis
B	Deionised Water	Aqua	62.15	
B	Rodicare T	Xanthan Gum	0.20	Solvay
B	Tri-Natriumcitrat	Sodium Citrate	0.40	
B	Paratexin® PE	Phenoxyethanol	1.00	Azelis
B	Polyaldo® 10-1-CC	Polyglyceryl-10 Caprylate/Capratae	0.50	Lonza
B	Brontide™	Butylene Glycol	5.00	Genomatica
B	Hexylene Glycol	Hexylene Glycol	3.00	
B	Apprecier™	Ascorbyl Palmitate Phosphate	1.00	Showa Denko
B	Blanova® Active D-Panthenol 75%	Panthenol, Aqua	0.75	Azelis
C	Maisita 9040	Zea Mays Starch	6.00	Agrana
C	Blanova® Aloe Vera Gel Conc.Juice 10x	Aqua, Aloe Barbadensis Extract	1.00	Azelis

**Manufacturing Instructions**

Heat phases A and B up to 70°C.

Add phase A to phase B and homogenise.

At 30-40°C homogenise again.

Add phase C to phase AB.

Adjust pH to 7.

**Specification**

Flow point @ 20°C: 6100 mPa

Viscosity @ 1/s, 20°C: 58000 mPas

Stability Testing ongoing

Formulation developed by Azelis Personal Care



creating value,  
growing together